

# Graduate Certificate in Religious Education (GCRE)

## Start date

February 2024

## Duration

2 years (part-time)

## Delivery Mode

Each unit will be delivered in face-to-face intensive mode spread over a specified and agreed timeframe. In addition, a variety of learning resources, activities and engagements will be hosted via the ACU online learning environment with clear and consistent information on expectations communicated in advance.

## Sponsorship

The Diocese of Cairns is offering a limited number of sponsored places to qualified primary and secondary school educators within the diocese who currently teach (or aspire to teach) Religious Education.

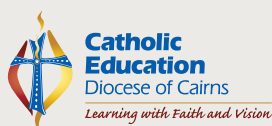
## Contact

Director Identity and Outreach  
Catholic Education,  
Diocese of Cairns:  
[GradCertRE@cns.catholic.edu.au](mailto:GradCertRE@cns.catholic.edu.au)

CRICOS registered provider: 00004G

*Disclaimer (September 2023): Information correct at time of printing. The university reserves the right to amend, cancel or otherwise modify the content without notice.*

In partnership with



“...above all with your life be witnesses of what you communicate...”

Pope Francis

In partnership with the ACU Faculty of Theology and Philosophy, Cairns Catholic Education Diocese of Cairns is sponsoring a number of places in the Graduate Certificate in Religious Education (GCRE) to qualified primary and secondary teachers who currently teach (or aspire to teach) Religious Education.

Uniquely tailored to the needs of the Catholic education system in the Diocese of Cairns, as well as the broader Australian context, the course draws deeply from the Catholic theological tradition and takes the interests, needs, and questions of individuals and organisations as the starting point for theological learning and reflection.

The GCRE learning outcomes, as well as those that anchor the specific units of the program, have been developed in line with the principled theoretical and methodological frameworks that support the Enhancing Catholic Schools Identity (ECSI) Project.<sup>1</sup>

Collectively they ensure a consistent, coherent and explicit focus on the preparation and accreditation of educators to work with the religious education curriculum. The GCRE functions to affirm the crucial role of the teacher in witnessing faith, as personal, as alive, and as advancing the formative vision of Catholic schools as an inclusive educational community.

## PROGRAM STRUCTURE

This is a two-year part-time program comprising of four academic units. Each module, and each unit, progressively builds towards defined course level learning outcomes through a series of readings, resources, reflective learning activities, online engagements and assessments.

## RECOGNITION OF PRIOR LEARNING (RPL)

Previous academic study may be eligible for credit under ACU's Recognition of Prior Learning Policy. Please contact the faculty's Postgraduate Course Coordinator via [FTP.PG@acu.edu.au](mailto:FTP.PG@acu.edu.au) with any questions.

“The ACU GCRE is an opportunity to explore the Tradition and traditions of the Catholic Church accompanied by specialist lecturers from ACU and members of the Identity & Outreach Directorate. The units invite participants to reflect on their own faith journey while learning about the particular contexts we encounter as teachers and leaders of Catholic schools. Join us on this learning journey to depth your understanding of what it means to be Catholic today.”

Ms Rachel McLean, Director, Identity and Outreach, Catholic Education, Diocese of Cairns

# Graduate Certificate in Religious Education (GCRE)

## ASSESSMENT

Participants in this course are recognized as adult learners who develop deep understanding when their learning is relevant to them and connected to the context in which they lead others to learn. Assessment tasks in all units are thus designed to facilitate the integration of theory and practice through study, action, analysis, application and reflection.

## UNIT DESCRIPTIONS

### Interpreting Biblical Texts for Contemporary Times

In this unit, participants will be provided with an opportunity to explore hermeneutical approaches to reading Scripture. Participants will engage with and examine, critical and reflexive forms of biblical interpretation for our contemporary world.

This unit supports educators in Catholic schools to lead learners in an interpretation of Scripture that is conducted in light of their own experience and their contemporary context.

### Introducing Church Life

This unit provides a theological framework for participants to develop a coherent understanding of the Catholic tradition in its communal, sacramental, liturgical and moral dimensions. Students will explore fundamental questions about the emergent Christian communities, the church's self-understanding through history, and the practical implications of such analysis for Christian belief in a secular, pluralist society.

### Reflecting on Faith, Recontextualising Tradition

In this unit, participants reflect on Catholic faith, bringing this knowledge into critical dialogue with their own perspectives, and assessing the implications of that dialogue for their work. Participants are introduced to the core theoretical principles and methodological practices of the Enhancing Catholic Schools Identity (ECSI) research.

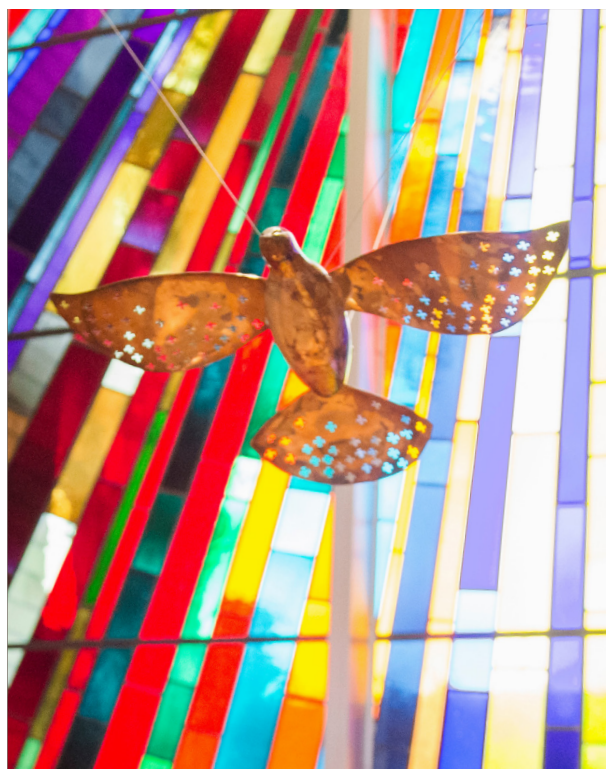
### The Hermeneutic Communicative Model of Religious Education

In this unit participants will examine the Hermeneutic- Communicative Model (HCM) of religious education and create practical applications through developing skills in dialogue and moderation. The knowledge and reflections developed in the previous units will provide participants with practice in articulating a critical and contemporary witness to the Christian tradition.

## FURTHER STUDY

The GCRE provides a pathway to other postgraduate offerings at ACU, including the Master of Religious Education (advanced standing of up to 40 credit point). Credit towards other ACU master's programs will be reviewed in line with the relevant course rules. Please consult the course coordinator for more information.

*1. Bring sound knowledge of Catholic tradition into critical dialogue with their own faith perspective, assess its implications for their work in Catholic schools, and demonstrate skills in its communication to adults as well as to children or young people.*



“The theology in this course encouraged me to deconstruct my understanding of some elements of the Catholic faith and to reconstruct them in a new, meaningful way that informs my teaching practice. It offered an opportunity to grow in faith and fellowship and it provided me with a new lens to view Scripture. I feel empowered to open dialogue with others, to share my knowledge and understanding of the Catholic faith.”

**Ms Christine Cross, Director of Mission, St Augustine's College  
(2020/2021 participant)**



## Expression of interest Graduate Certificate in Religious Education

The Diocese of Cairns is committed to supporting the ongoing professional development of its teachers. In 2024 the Cairns Catholic Education Office is partnering with the ACU Faculty of Theology and Philosophy to offer a limited number of sponsored places in the Graduate Certificate in Religious Education to those who currently teach, and those who aspire to teach, religious education (RE).

### Contact

Director Identity and Outreach  
Catholic Education,  
Diocese of Cairns:  
[GradCertRE@cns.catholic.edu.au](mailto:GradCertRE@cns.catholic.edu.au)

CRICOS registered provider: 00004G

*Disclaimer (September 2023): Information correct at time of printing. The university reserves the right to amend, cancel or otherwise modify the content without notice.*

In partnership with



**Catholic  
Education**  
Diocese of Cairns  
*Learning with Faith and Vision*

“Studying the graduate certificate gave me new perspectives and practical ideas to foster and enhance my faith formation journey in a deep and meaningful way that I never thought imaginable.”

Ms Jo Brooks, Teacher, St Augustine’s Mossman (2020/2021 participant)

### INFORMATION FOR PROSPECTIVE STUDENTS

- Places in the course will be partially sponsored with the Diocese of Cairns paying 75 per cent of the tuition fee per unit and you responsible for the remaining 25 per cent. In 2024 the unit tuition fee is \$2,100.
- You will also be responsible for the Student Services and Amenities Fee (SSAF) (in 2023 this is \$122 per half year/\$244 annually for part-time students).
- Note, all fees are subject to review on an annual basis. Visit [acu.edu.au/fees](http://acu.edu.au/fees) for current information.
- Classes will run as three day, face-to-face intensives. Two of the days will be normal working days and your school will need to provide time release for those days.
- Due to the time release requirement you will need your Principal’s endorsement for your expression of interest (EOI) to be considered.

### INFORMATION FOR SCHOOL PRINCIPALS

- Units are run as three day intensives with two of these days being normal working days.
- In the case of multiple applications from your school you may be required to prioritise applications based on your school’s operational requirements.

### UNIT DATES

**Unit 1: Introducing the Scriptures – Interpreting Biblical Texts for Contemporary Times**

Thursday 22 – Saturday 24 February 2024

Delivery mode: attendance

**Unit 2: Introducing Church Life**

Thursday 15 – Saturday 17 August 2024

Delivery mode: attendance

**Unit 3: Reflecting on Faith, Recontextualising Tradition**

Thursday 13 – Saturday 15 March 2025

Delivery mode: attendance

**Unit 4: The Hermeneutic Communicative Model of Religious Education**

Thursday 21 – Saturday 23 August 2025

Delivery mode: attendance

**Further details regarding enrolment and tuition fees will be provided to successful applicants.**



# Graduate Certificate in Religious Education

## Expression Of Interest (EOI) Form

### How to express interest

#### APPLICANT

1. Complete the personal details on the EOI Form.
2. Submit the form to your school principal for authorisation to apply.
3. Once signed off by your school principal send the completed form to [GradCertRE@cns.catholic.edu.au](mailto:GradCertRE@cns.catholic.edu.au).

#### SCHOOL PRINCIPAL

1. Assess the application in the context of your 2024/2025 staffing requirements.
2. Sign and date the EOI form.

#### APPLICANT DETAILS

<b>Name</b>		<b>School</b>	
<b>Email</b>		<b>Mobile Phone</b>	
<b>Position on staff</b>	<i>Please describe your position eg Classroom teacher; Leader Diversity, Counsellor etc.</i>		
<b>Do you teach RE?</b>	<b>Yes</b>	<b>No</b>	
<b>If you are not already in leadership, are you seeking leadership opportunities in the future?</b>	<i>If yes, please describe the leadership opportunities you are seeking to pursue.</i>		
<b>Previous Study</b>	<i>Please list previous Undergraduate and Postgraduate studies.</i>		
<b>Will you be applying for credit from previous studies?</b>	<i>If yes, list the previous study.</i>		
<b>Anything else you would like us to know?</b>			

#### SIGNATURE

I am interested in enrolling in the Graduate Certificate in Religious Education in 2024.

Signature of applicant \_\_\_\_\_ Date \_\_\_\_/\_\_\_\_/\_\_\_\_

#### PRINCIPAL'S ENDORSEMENT

I give in-principle agreement to the above-named staff member to express interest in the Graduate Certificate of Religious Education.

Signature \_\_\_\_\_ Name \_\_\_\_\_ Date \_\_\_\_/\_\_\_\_/\_\_\_\_